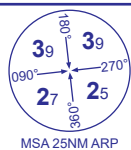
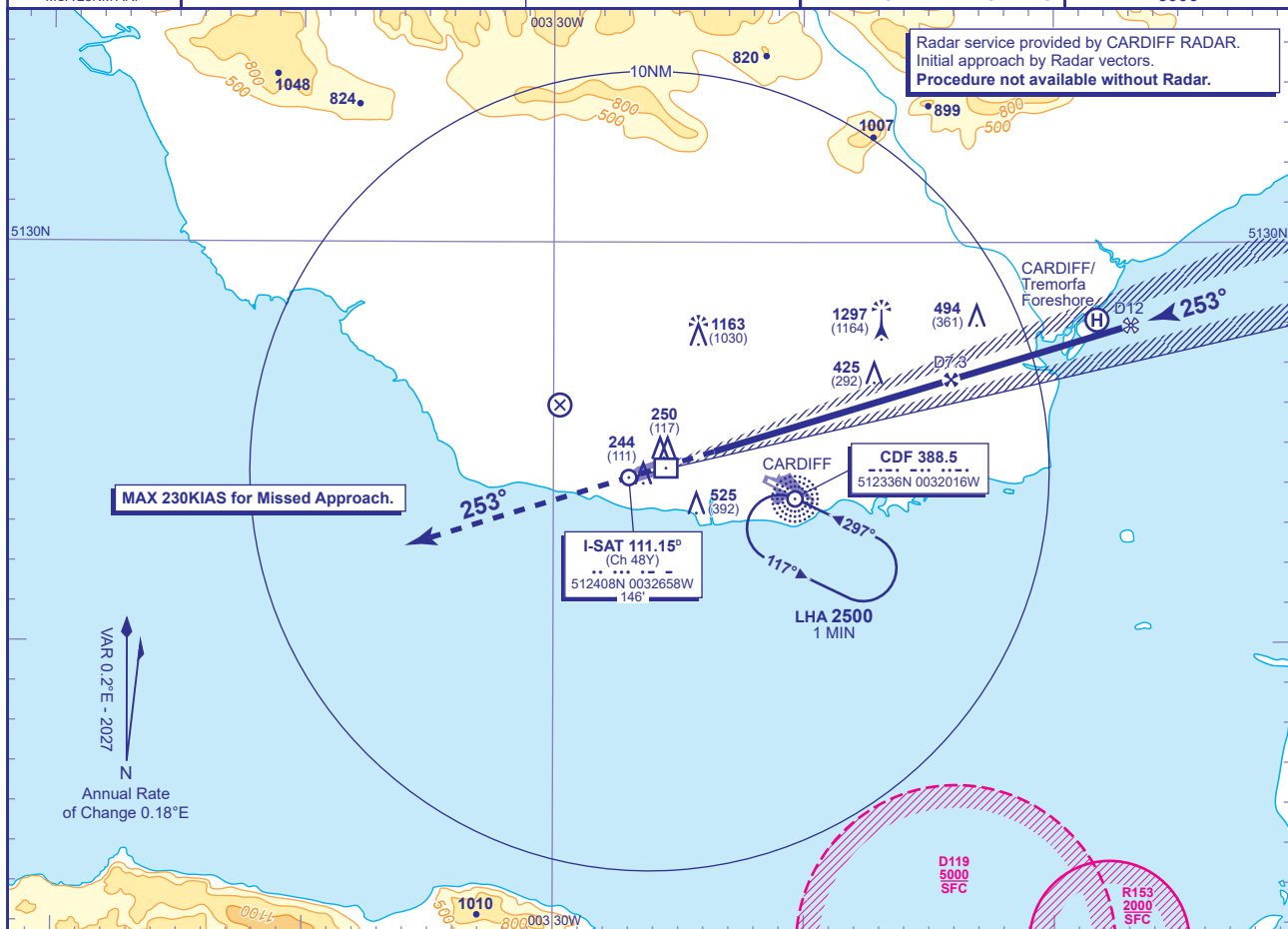


**ST ATHAN
ILS/DME
RWY 25
(ACFT CAT A,B,C,D)**



APP 119.155, 125.855	CARDIFF APPROACH	AD ELEVATION 164
RAD 125.855	CARDIFF RADAR	THR ELEVATION 133
TWR 122.865	ST ATHAN TOWER	OBSTACLE ELEVATION 1297 AMSL (1164) (ABOVE THR)
ATIS 130.560	ST ATHAN INFORMATION	
		BEARINGS ARE MAGNETIC

TRANSITION ALTITUDE
6000



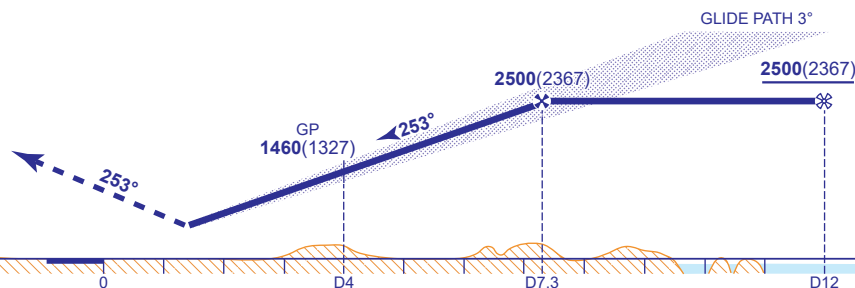
RECOMMENDED PROFILE GLIDE PATH 3°, 318FT/NM

DME I-SAT	7	6	5	4	3	2
ALT(HGT)	2410(2277)	2090(1957)	1780(1647)	1460(1327)	1140(1007)	820(687)

RDH 50

Climb straight ahead to **4000** then as directed by ATC.

RCF: Climb to **5000**, initially straight ahead to **4000** or **I-SAT D4** whichever is later then turn left to **NDB CDF** to hold at **5000**. MAX 230KIAS.



DME I-SAT zero ranged to THR RWY 25

Aircraft Category		A	B	C	D	Rate of descent	G/S KT	160	140	120	100	80
OCA (OCH)	Procedure	633(500)	633(500)	633(500)	633(500)		FT/MIN	850	740	640	530	420
VM(C)OCA (OCH AAL)	Total Area	830(666)	830(666)	1560(1396)	1560(1396)							

CHANGE (13/25): MAG VAR UPDATED. MAG HEADINGS.